

Great Lakes Opportunities for Regeneration

Dr. Gail Krantzberg, Director

Centre for Engineering and Public Policy,
McMaster University, Hamilton, Ontario

Krantz@Mcmaster.ca



Overview

- ◆ Symptoms of governance failures
- ◆ Search for binationalism in the Laurentian Great Lakes region
- ◆ Opportunities for reform and regeneration
- ◆ Final commentary

Have we reached The Tipping Point?



“The Great Lakes are deteriorating at a rate unprecedented in their recorded history and are near the tipping point of ecosystem-wide breakdown.”

– Alfred Beeton, 2005.

Symptoms of governance deficits:

Ongoing, re-emerging and emerging
challenges to the Integrity
of the Great Lakes Basin Ecosystem



EUTROPHICATION -NOT CONQUERED

Factory Farms: CAFOs

Combined sewer
overflow, NPS



\$Billions Needed

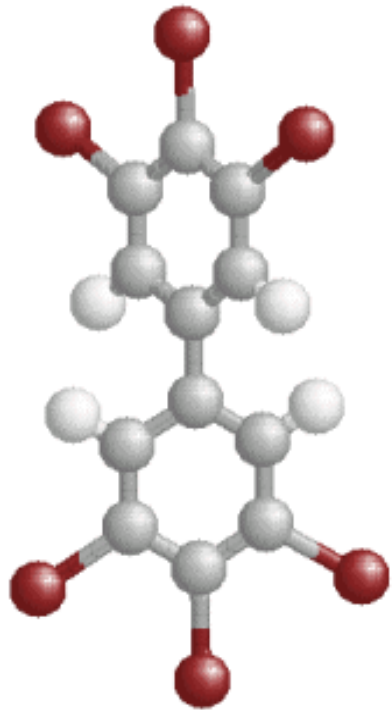


A long way to go



Cleaning up Legacy Pollutants

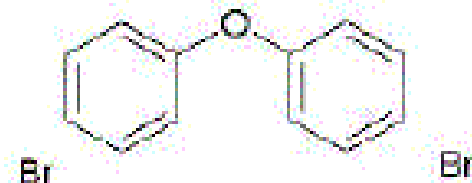
The New PCBs? TOXIC CHEMICALS -NOT CONQUERED



Hexabromobiphenyl
(a Polybrominated Biphenyl)
www.atsdr.cdc.gov/



Polybrominated Diphenyl Ethers
(PBDEs)



Land Use Matters



AIR QUALITY/ SPRAWL: NOT CONQUERED

More cars traveling longer distances



CAR HABITAT



Aquatic Invasive Species

Billions of dollars in damages



Can we stop this
invasion?

- NOT
CONQUERED

An aerial photograph of a large cargo ship, the Canadian Leader, sailing on Lake Erie. The ship is dark-colored with a white superstructure and a red funnel. The deck is visible, showing several large rectangular hatches. The water is a deep blue-green color. The ship is moving from the top left towards the bottom right of the frame.

NOBOBs: what's the problem?

Invaders keep coming
Not conquered

CANADIAN LEADER, Lake Erie, 10 / 28 / 2002,
Don Coles, Great Lakes Aerial Photos



A
changing
climate

Prepare to adapt, if not
mitigate





Why are we NOT planning for
drought and for increased
severity of storms

What can a revised
GLWQA Achieve?

Vision, Coordination,
Accountability,
Leadership...

Great Lakes Restoration Initiative

- ◆ Exciting prospects for environmental, economic, and social excellence for the region
- ◆ Builds on 5 years of work of the Great Lakes Interagency Task Force and stakeholders, guided by the Great Lakes Regional Collaboration
- ◆ Domestic agenda, not binational coordination

Canadian Actions

- ◆ Federal Departments had requested \$1 billion, received \$40 million
- ◆ COA July 2007, valid until 2010



- ◆ Domestic coordination in partial support of binational commitments



Binationalism

- ◆ Reinvigorate a Binational Vision to coordinate imperatives that achieve stretch goals
- ◆ Science and policy advances of the last 23 to 38 years are not reflected in the GLWQA
- ◆ Complexity of issues means innovating governance and resolving accountability matters



Critical need:

Independent review the governance and accountability of the Agencies and the IJC in an impartial manner.

This analysis is vital for local authorities to influence the future of Great Lakes sustainability.

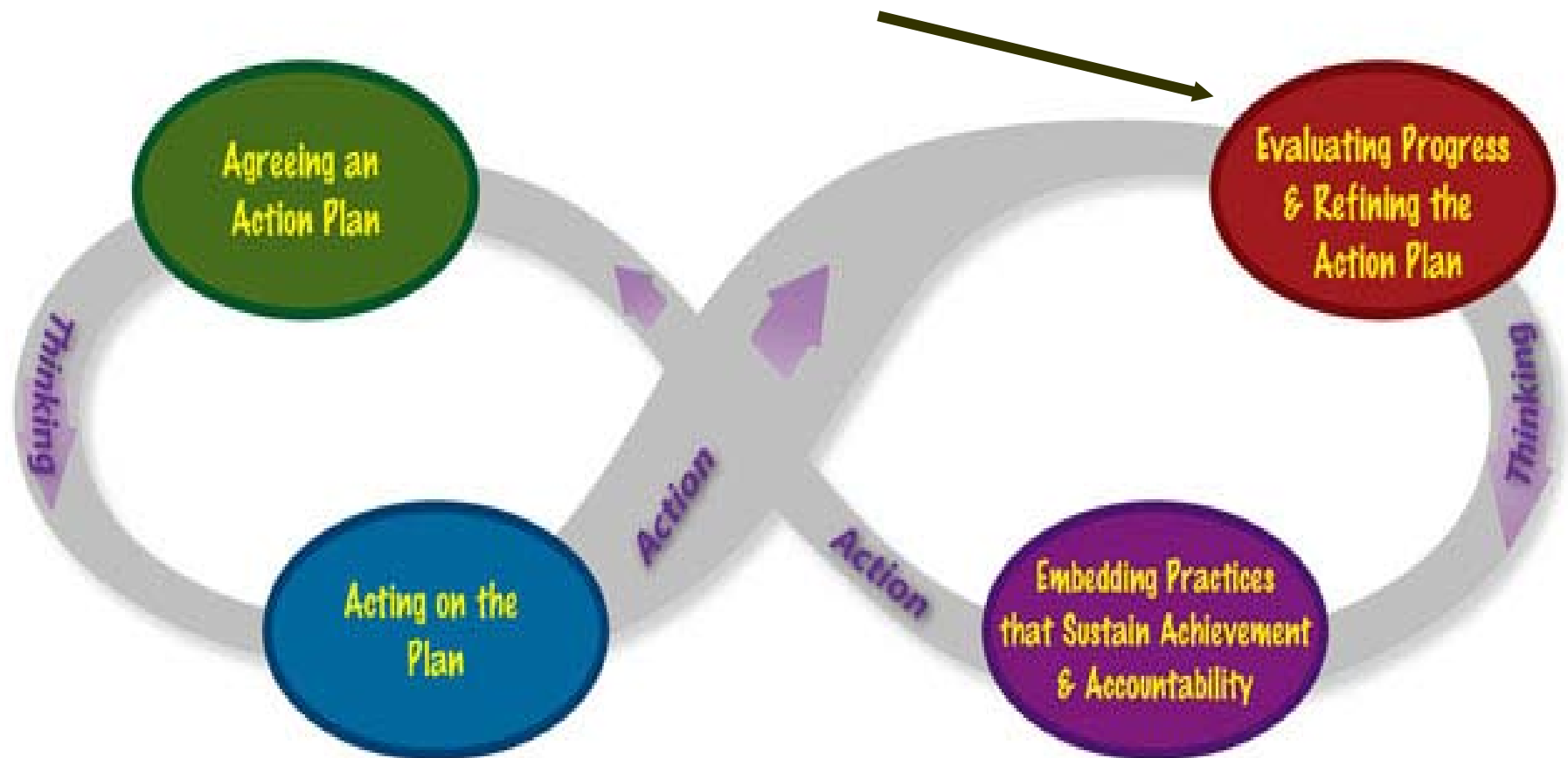
Demand involvement and action





New Remedies for the GLWQA amendments

- ◆ Action plans, Programs and Policies that are
 - Nimble
 - Ecosystemic
 - Sustainable
 - Coordinated
- ◆ Approached methodically, thoroughly, inclusively, thoughtfully



“Really deep learning is about continually moving back and forward
between *thinking* and *action*”

Peter Senge



Amending the GLWQA

- ◆ Announced June 13 2009
- ◆ First webinar to discuss the process January 2010
- ◆ First Canadian stakeholder advisory panel on the renegotiation of the glwqa January 2010

Approach of the Parties

- ◆ Governance
- ◆ Issues
- ◆ Synthesis



DO NOT ENTER



A Renewed Approach

- ◆ Focus on a lake-by-lake strategy that includes watersheds, the nearshore environment, and a shared responsibility among municipalities, business, industry, academe, land owners, etc.
- ◆ Build communities that share a common purpose of place-based protection and revitalization.
- ◆ Highlight the importance of the lakes invoking the **economic and social benefits** associated with Great Lakes protection and revitalization.



The Campaign

- ◆ Demonstrate that the Great Lakes are of national significance in each country to counter the notion that any related programs are regional in nature.
- ◆ Build national strategies for issues of importance to the Great Lakes and finance such prevention and remedial programs in a national context.
 - for example, a national program for water infrastructure for which the Great Lakes region would be allocated a proportion of the funds.



Profile

- ◆ The president and prime minister sign the Agreement.





A Personal Opinion

- ◆ Enhance and sustain our Great Lakes through defining and implementing *sustainable communities*
- ◆ Revise the Agreement to ensure civic engagement and human *stewardship*
- ◆ *Renovate responsibilities and accountability* for the Great Lakes in a renewed Agreement
- ◆ Take The Time To Do It RIGHT



Persevere, it is Worth Protecting

Thanks for Making the Lakes Great



Questions?